

The image shows a modern brick building with a dark tiled roof and large windows with white frames and horizontal blinds. A white door is visible in the center. The ground is paved. The 'oakheart' logo is in the top right corner, and a stylized tree logo is in the bottom right corner.

oakheart

£625 Per Month

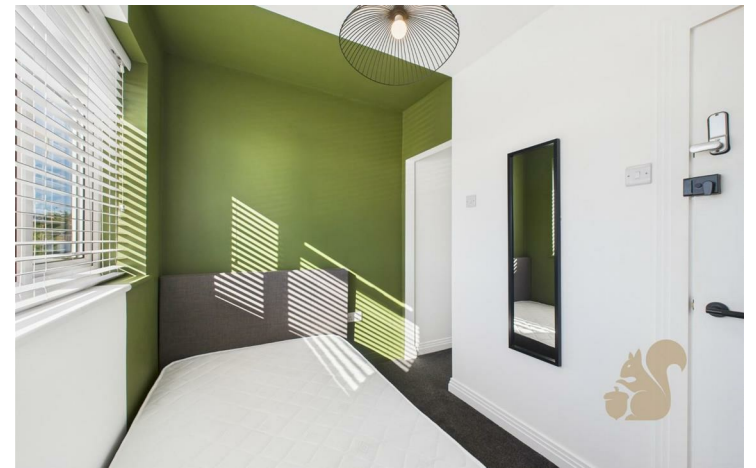
Per Month

Sunrise Avenue, Chelmsford

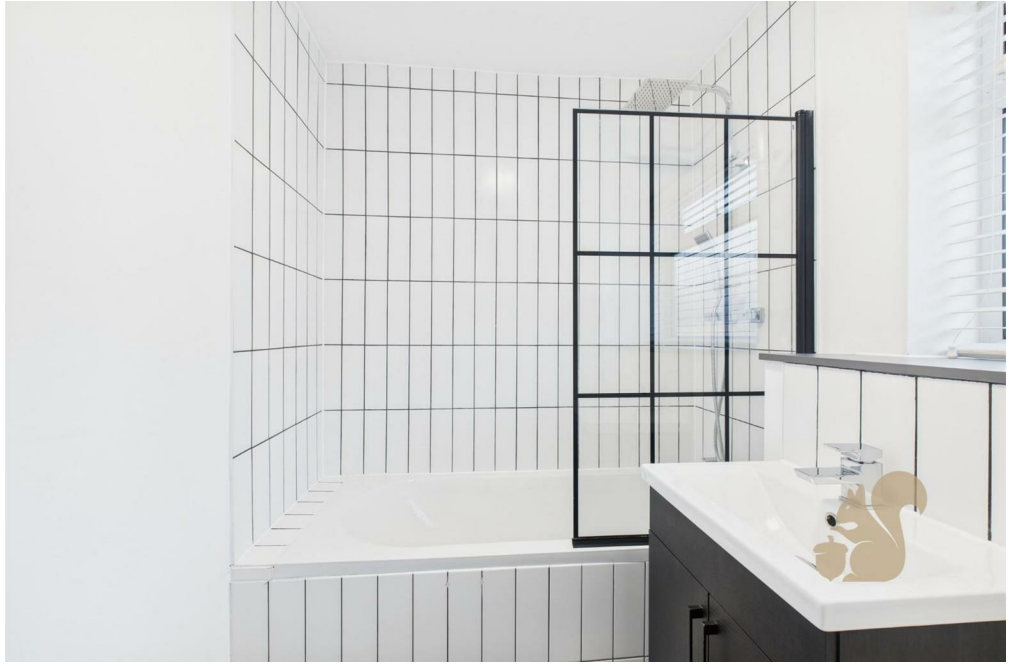
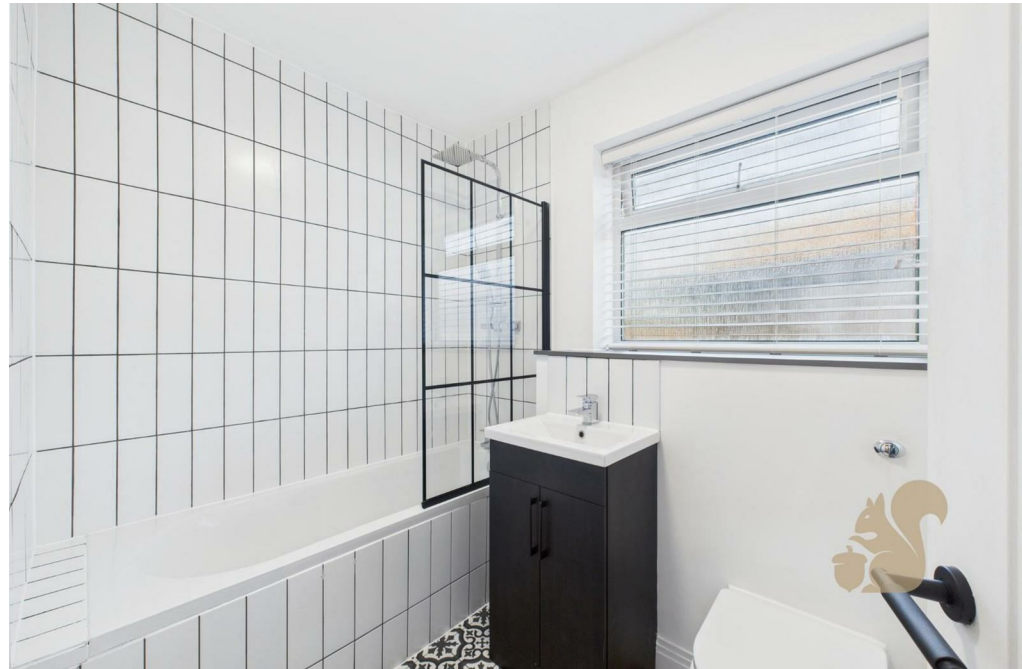
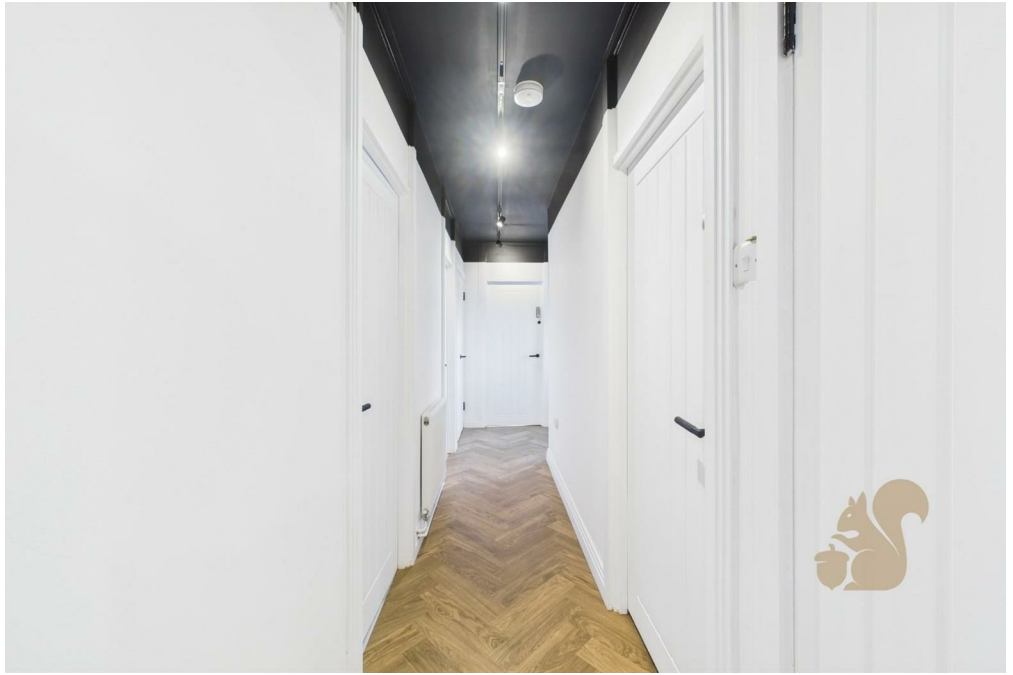
This beautifully presented double room is available to rent in a recently refurbished property finished to a high standard throughout. Located on the desirable Sunrise Avenue, the home offers a stylish and comfortable living environment ideal for professionals.

The room is spacious and tastefully decorated, featuring modern furnishings, ample storage, and plenty of natural

light. Tenants will also enjoy access to high-quality shared facilities including a fully equipped kitchen, contemporary bathroom, and a comfortable communal living area.












Local Authority:

Tenure:

Council Tax Band:

Energy Efficiency Rating

	Current	Potential
<i>Very energy efficient - lower running costs</i>		
(92 plus) A		
(81-91) B		
(69-80) C		
(55-68) D		
(39-54) E		
(21-38) F		
(1-20) G		
<i>Not energy efficient - higher running costs</i>		
England & Wales	EU Directive 2002/91/EC 	

Agents Note: Whilst every care has been taken to prepare these particulars, they are for guidance purposes only. All measurements are approximate and are for general guidance purposes only and whilst every care has been taken to ensure their accuracy, they should not be relied upon.

Oakheart Colchester - Lettings
01206 803 303
essexlettings@oakheart.co.uk
2b Cotman Road, Colchester, Essex, CO3 4QJ

oakheart